

# Herricks Public School

## November Bond Update Report / Phase 2



**PARK EAST CONSTRUCTION**

**Prepared by Brian Costello**



# Herricks Public Schools

Phase 2  
Herricks High School

## Work Completed in the Month of November

### Stalco - Comfort Station

- ▶ 90% of punchlist items rectified

### Landtek - Grandstand and Site-work

- ▶ Grandstand decorative fencing 80% installed. Remaining fence will be installed Friday and ready for punchlist walk-through by BBS
- ▶ Shotput slab and sand pit repaired

### Stalco - Cafeteria

- ▶ Wall repaired where old water fountain pipes were removed
- ▶ Kitchen floor tiles repaired where old water and drain pipes were removed
- ▶ Semi-curved cafeteria wall painted and cove base installed. Awaiting oak sill installation

### JVR - Cafeteria

- ▶ Re-energized hot water pump for HVAC in kitchen cellar



# Herricks Public Schools

## Phase 2

### Herricks High School

#### Work Completed in the Month of November Continued

##### WHM - Cafeteria

- ▶ All old pipes removed from walls and floors
- ▶ Kitchen plumbing isolation valves installed in cellar
- ▶ Installed new regulator valve for hot water heater gas supply
- ▶ Punchlist 100% complete and ready for BBS closeout walk-through

##### Best Climate - Cafeteria

- ▶ Adjusted climate controls and balanced HVAC for kitchen
- ▶ Removed all remaining items from cellar HVAC demo
- ▶ Punchlist 100% complete and ready for BBS closeout walk-through

##### Benchmark - Windows and Doors

- ▶ Completed installation of Elevations W4 and W6
- ▶ Capped and caulked windows at elevations W1 and W2



## **Comfort Station** Stalco

# Herricks Public Schools

## Phase 2

### Herricks High School



Roof Exhaust Caps Installed



Lintels painted with rust inhibitor



## **Sitework/ Grand Stand** **Landtek**

# Herricks Public Schools

## Phase 2

### Herricks High School



Decorative fencing installed. Shotput slab repaired.





## **Cafeteria Reconstruction** ***Stalco***

# Herricks Public Schools

Phase 2  
Herricks High School



Building expansion joint installed



Semi-curved wall spackled and painted. Ready for oak sill.



## **Cafeteria Reconstruction**

JVR Electric



Kitchen HVAC hot water pump re-energized



## **Cafeteria Reconstruction**

***WHM Plumbing***



New gas stepdown regulator installed for kitchen water heater.

## **Herricks Public Schools**

**Phase 2**  
**Herricks High School**



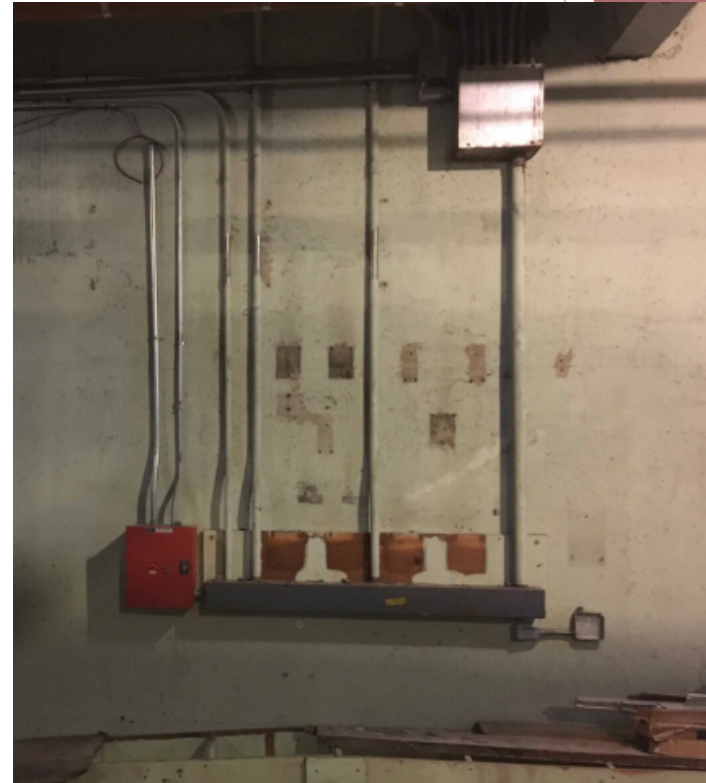
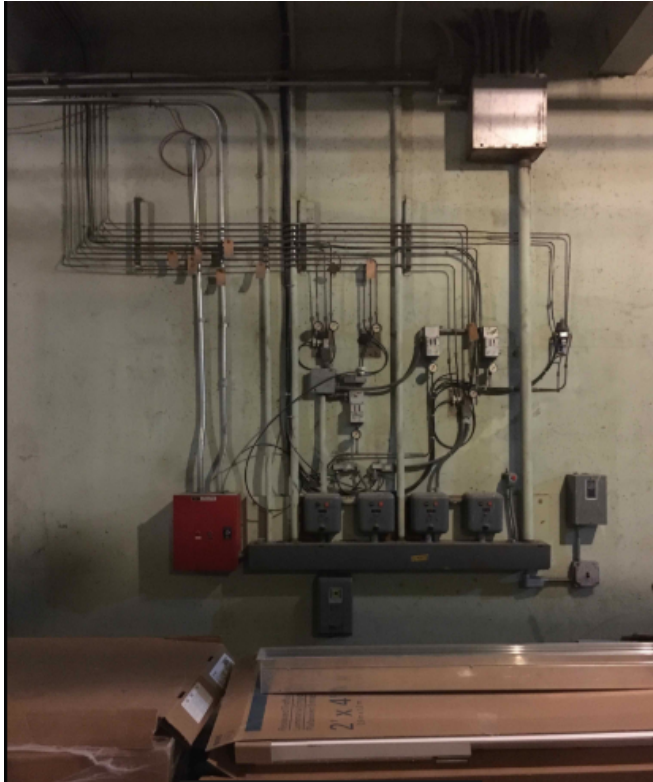
New indirect drain installed under handwash sink.





## **Cafeteria Reconstruction**

### **Best Climate Controls**



Remaining demo removed from the kitchen cellar (before and after).



# Herricks Public Schools

Phase 2

Herricks High School

## **Window and Door Replacement** Benchmark



Elevation W4 before.



Elevation W4 after (without capping).



# Herricks Public Schools

Phase 2

Herricks High School

November 2018 Progress Report

## Window and Door Replacement Benchmark



Elevation W6 hallway protection.



Elevation W6 installed (without Capping).



## Work to be Completed During the Month of December

### Comfort Station

- ▶ Fencing to be installed by Stalco
- ▶ All punchlists to be rectified by prime contractors and their subs
- ▶ Punchlist closeout walk-throughs

### Grandstand/Site-work

- ▶ Punchlist walk through with BBS
- ▶ Punchlist to be completed by Landtek

### Cafeteria

- ▶ All punchlists to be rectified by prime contractors and their subs
- ▶ Punchlist closeout walk-throughs

### Windows and Doors

- ▶ Elevations W3 and W5 to be demo'd and rebuilt
- ▶ All remaining capping on previously built elevations to be installed
- ▶ Re-ordered windows for elevation W10 to be installed

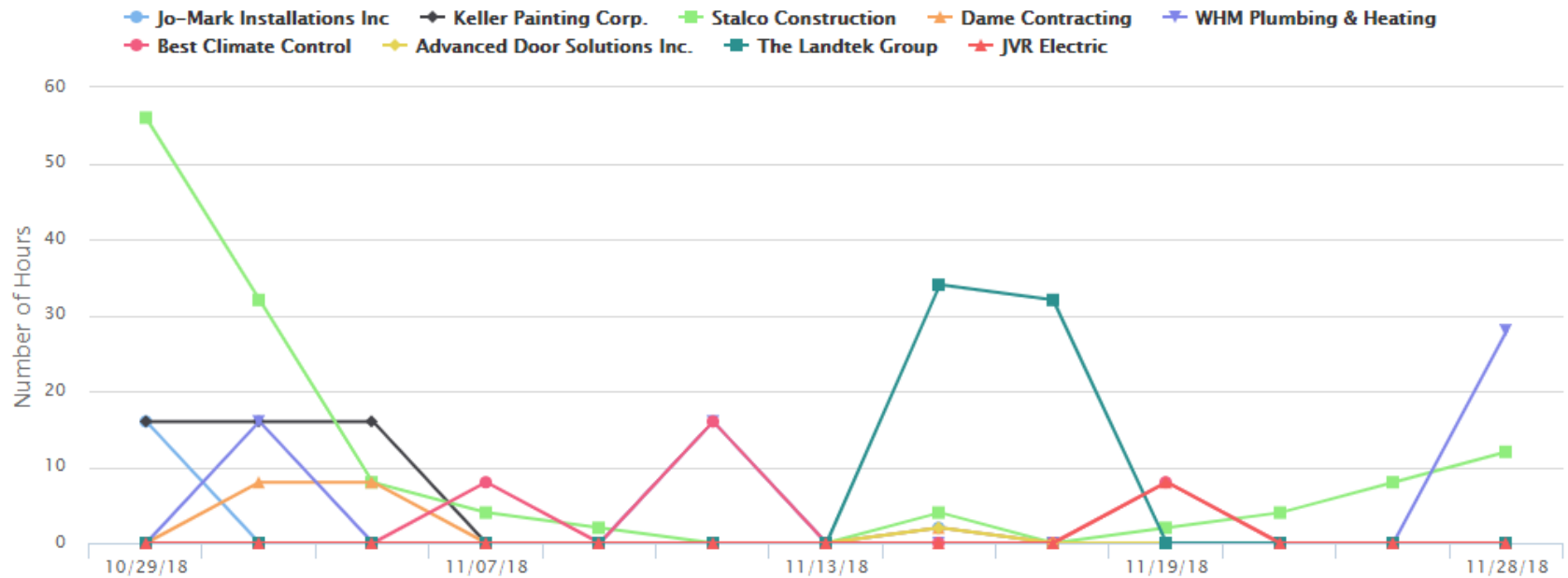


# November Manpower Report

## Herricks Phase 2 Work

### Daily Log Manpower Report

#### ▼ MANPOWER GRAPH



**PARK EAST  
CONSTRUCTION CORP.**

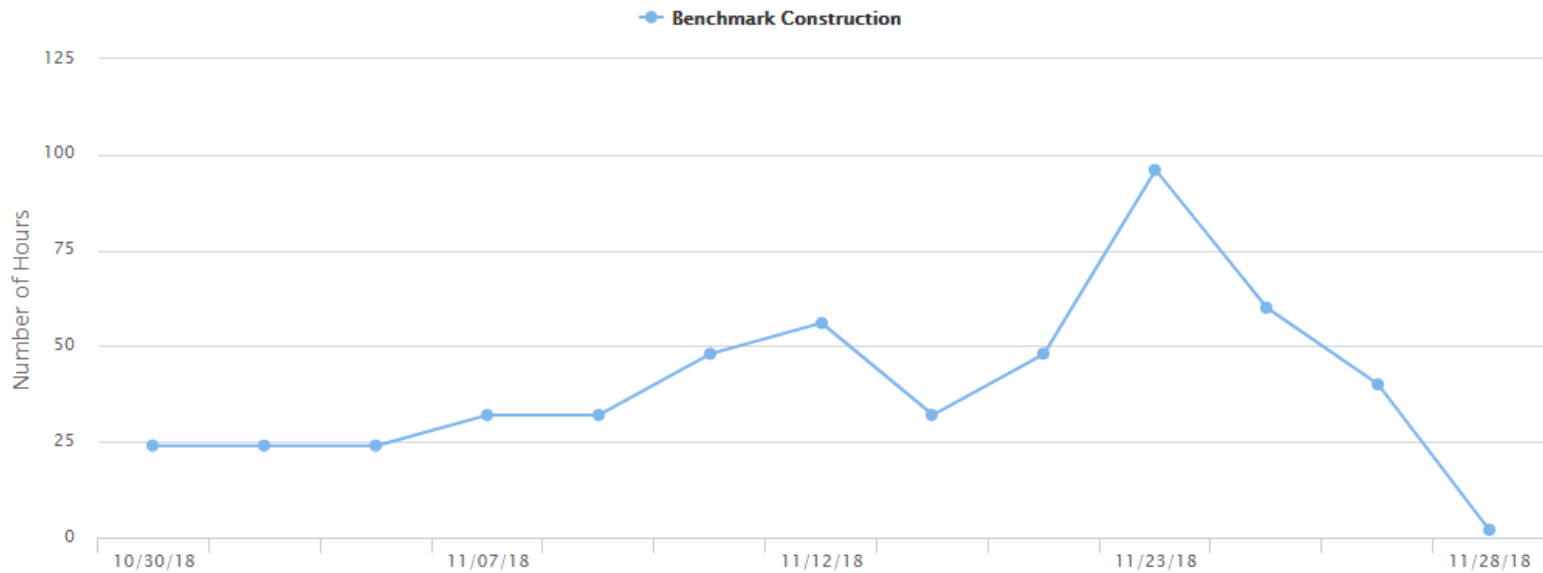


# **November Manpower Report**

## **Window and Door Replacement**

### Daily Log Manpower Report

#### ▼ MANPOWER GRAPH



**PARK EAST  
CONSTRUCTION CORP.**